

**Spirited Away in Japan : A Studio Ghibli – Hayao Miyazaki Itinerary**  
**Tokyo – Kyoto – Onomichi – Yakushima – Osaka**  
**(13 nights 14 days)**

**Designed for Your Clients**

Japanese Animation movies have been famous for decades and broadcasted all over the world, yet Hayao Miyazaki, co-founder of Studio Ghibli, has taken it to another level with masterpieces such as "Spirited Away" (Best Animated Feature – Academy Award®), "My Neighbor Totoro" and "Princess Mononoke", which magical features talk straight to the heart and soul of the viewer.

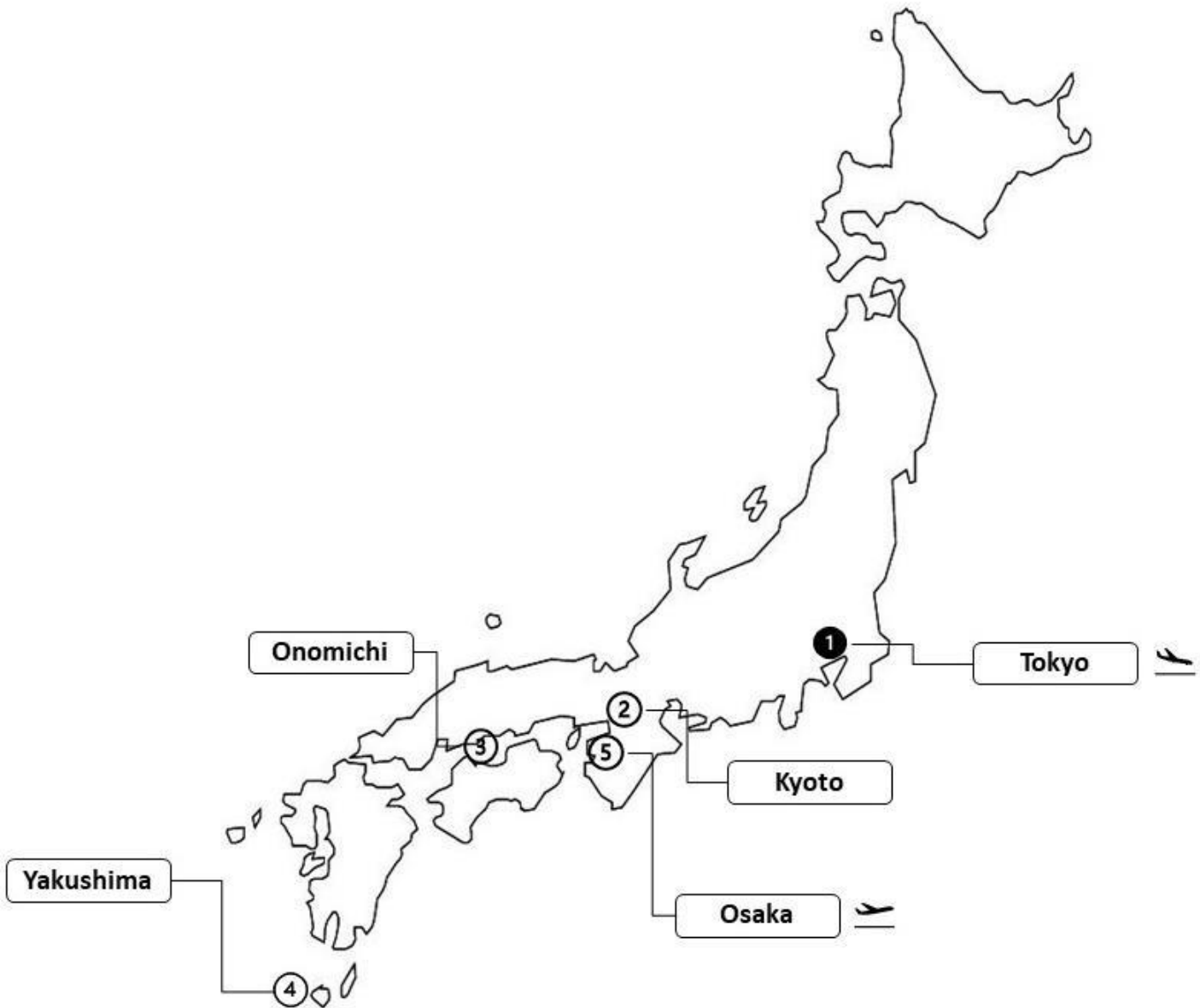
This customizable itinerary was specifically designed for Hayao Miyazaki's fans, combining local sightseeing with locations that have inspired or resemble the most famous movies of Studio Ghibli. Explore the urban settings of Tokyo & Kyoto, the clifftop overlooking the Seto Sea and the deep forest of Yakushima, entering the world of your favourite films in a dream-like journey.



### Itinerary at a Glance

Date	Program	Accommodation
Day - 1	Arrival in HND/NRT	Mandarin Oriental Tokyo
Day - 2	Tokyo	Mandarin Oriental Tokyo
Day - 3	Tokyo	Mandarin Oriental Tokyo
Day - 4	Day Trip to Sayama Hills	Mandarin Oriental Tokyo
Day - 5	Move to Kyoto	The Ritz-Carlton, Kyoto
Day - 6	Kyoto	The Ritz-Carlton, Kyoto
Day - 7	Day Trip to Tomogashima	The Ritz-Carlton, Kyoto
Day - 8	Day Trip to Nara	The Ritz-Carlton, Kyoto
Day - 9	Move to Onomichi	Bellavista Spa & Marina Onomichi
Day - 10	Day Trip to Dogo Onsen	Bellavista Spa & Marina Onomichi
Day - 11	Move to Yakushima	Sankara Hotel & Spa Yakushima
Day - 12	Yakushima	Sankara Hotel & Spa Yakushima
Day - 13	Move to Osaka	St. Regis Hotel Osaka
Day - 14	Departure from KIX	N/A

## Your Travel Map



## What is Studio Ghibli?

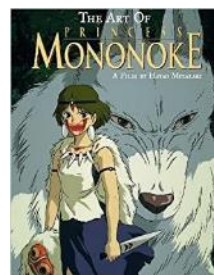
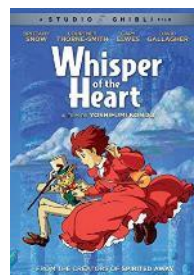


Studio Ghibli Inc. is a Japanese animation film studio headquartered in Koganei, Tokyo. The studio is best known for its animated feature films, and has also produced several short films, television commercials, and one television film. It was founded on June 15, 1985 by directors Hayao Miyazaki and Isao Takahata and producer Toshio Suzuki, after the success of Topcraft's anime film Nausicaä of the Valley of the Wind (1984). Studio Ghibli has also collaborated with video game studios on the visual development of several video games.

## The list of movies you should watch before your trip...

You will discover some locations that resemble, mimic, or have even inspired some of Studio Ghibli Films. So, it would be more interesting if you would watch these films before your trip.

No.	English Title	Japanese Title	Year
1	Castle in the Sky	<i>Tenkū no Shiro Rapyuta</i>	1986
2	My Neighbor Totoro	<i>Tonari no Totoro</i>	1988
3	Whisper of the Heart	<i>Mimi o Sumaseba</i>	1995
4	Princess Mononoke	<i>Mononoke-hime</i>	1997
5	Spirited Away	<i>Sen to Chihiro no Kamikakushi</i>	2001
6	Ponyo	<i>Gake no Ue no Ponyo</i>	2008



## Detailed itinerary

### Day – 1, Arrival in Narita/Haneda International Airport

After arriving at **Narita/Haneda International Airport** and completing immigration formalities, you will be greeted by your **English Speaking Chauffeur** at the arrival hall and transfer by Private Chartered Car to the hotel.



### Mandarin Oriental Tokyo



Upon arrival at Mandarin Oriental Tokyo, you will be overwhelmed by the dramatic first impression. The extraordinary lobby surrounded by glass and the futuristic luxury of the interiors illustrates the hotel's defining style; extreme comfort whilst reflecting Japan's characteristics.

### **Overnight at Mandarin Oriental Tokyo**



## Day - 2, Tokyo

At **10:00**, meet with your **English Speaking Guide** in the hotel lobby and leave for Tokyo excursion by Private Chartered Car.

First, visit the huge **Meijijingu Shrine**, constructed in 1920 by more than 100,000 volunteers to honor Emperor Meiji, the first emperor of modern Japan at the outset of the Meiji period.



Move onto a major fashion and shopping corner in Tokyo, **Harajuku** is famed for its Harajuku Girls, who wear a style of clothing that originated in the street culture of major cities in Japan. The main street of Harajuku is **Takeshita-dori** for taking a look at various shops including Kiddy Land where you can find Ghibli goods!



Then move to Roppongi area and climb up to the **Roppongi Hills observation deck** on the top Floor and take in the amazing views of “Tokyo City Views”. There are two relaxed “café” where you can take a break enjoying the sweeping sight over the metropolis.



Lastly, visit at **Hyakudan Kaidan** at Hotel Tokyo Gajoen, built in 1935 and known as the Showa Era's 'Palace of the Dragon God,' Meguro Gajoen was the first wedding complex to be built in Japan. Housing the Hyakudan Kaidan (100 steps staircase), it is a Registered Tangible Cultural Asset. – In fact, the acclaimed director Miyazaki Hayao is widely believed to have taken inspiration from Meguro Gajoen's marvelous architecture to make the castle featured in the movie *"Spirited Away"*.



Come back to the hotel by 18:00.

**Overnight at Mandarin Oriental Tokyo**



### Day - 3, Tokyo

At 9:30, meet with your **English Speaking Guide** in the hotel lobby and leave for Tokyo excursion by Private Chartered Car.

Transfer to **Ghibli Museum in Mitaka**: the animation and art museum of Miyazaki Hayao's Studio Ghibli, one of Japan's most famous animation studios. The museum itself is whimsically designed in the distinct style of the studio's films, and many of their famous characters are there, including a life-sized robot from "Castle in the Sky" in the rooftop garden. (Museum is possible to visit by appointment only.)



After the visit, you will move on to **Edo-Tokyo Open Air Architectural Museum**. Since the Edo period, Tokyo has lost many valuable historical buildings because of fires, floods, earthquakes and warfare. This museum aims to relocate, reconstruct, preserve and exhibit historical buildings of great cultural value that are impossible to preserve at their actual places as well as to inherit these valuable cultural heritages to future generations. The museum's bathhouse, said to be one of the inspirations for the Ghibli animated film *"Spirited Away"*.





Transfer to **Seiseki Sakuragaoka Town**. It is famous throughout Japan and the world for being the setting of the Studio Ghibli movie, *"Whisper of the Heart."* Take a stroll through Seiseki-Sakuragaoka's streets and you'll experience a laid back, comfortable atmosphere while reliving scenes from the film.



Come back to the hotel by 18:30.

Overnight at Mandarin Oriental Tokyo

#### Day - 4, Tokyo - Day Trip to Sayama

At 9:00, meet with your **English Speaking Guide** in the hotel lobby and leave for Day Trip to Sayama by Private Chartered Car.

First of all, transfer to **Totoro's Forest**. "Totoro's Forest" was named after the animation movie which was produced by Hayao Miyazaki from "*My Neighbor Totoro*" since the village in this movie was modeled in this area, Sayama Hills. Most of Totoro's forests are distributed around the area of northern part of Sayama Hills and some museums are located around this area as well to learn its history and folklore.



Then, stop by **Kurosuke's House** where is the base of Totoro Fund – In April of 1990, with the objective of preserving the lush nature of Sayama Hills to future generations, the National Trust of Totoro no Furusato was born. Due to the efforts of 5 initial contributors, including film director Hayao Miyazaki, a large amount of donations were received from all across Japan. Sayama Hills is known as the inspiration of Mr. Hayao Miyazaki's animation masterpiece, "Tonari no Totoro (My Neighbor Totoro)". The Trust Fund was named in its honor. (\*\*\*) opens only on Tuesdays, Wednesdays & Saturdays)



Come back to the hotel by 15:00.

**Overnight at Mandarin Oriental Tokyo**

### Day – 5, Move to Kyoto

At 11:30, check out the hotel, meet your **English Speaking Assistant** and transfer to **Tokyo Station** by Private Chartered Car.

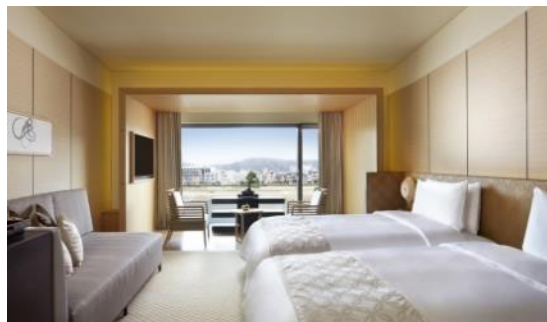
#### [Suggested Schedule]

**Bullet Train Nozomi #33 / Tokyo 12:30 – 14:44 Kyoto**



Upon arrival at **Kyoto Station**, you will be greeted by **English Speaking Assistant** and transfer to the hotel.

### The Ritz–Carlton, Kyoto



The Ritz–Carlton, Kyoto sits serenely on the banks of the Kamogawa river, in a prime location with expansive views of the famous Higashiyama Sanju–Roppo (36–mountain range). The hotel is also close to Kyoto’s famous downtown districts such as Gion, Kawaramachi and Pontocho streets, convenient locations for both sightseeing and business. Here, you can experience quality time that is only available in the world’s finest hotels, in a luxurious space that is steeped in the ancient traditions and culture of Kyoto.

### **Overnight at The Ritz–Carlton, Kyoto**



## Day – 6, Kyoto

At 9:00, meet **English Speaking Guide** in the lobby and start your Kyoto excursion by Private Chartered Car.

Today, start from **Kiyomizu-dera Temple** where you can also see the city of Kyoto. With its magnificent views of the city from its main hall attracting visitors throughout Japan, Kiyomizu-dera Temple was originally founded in 798. The common Japanese idiom “jumping from the veranda of Kiyomizu Temple” means that they are about to undertake some particularly bold or daring adventure.



A nice and relaxing stroll will take you through the old neighbourhood of “**Sannenzaka**” (Three year slope), which used to be the favored route of pilgrims before reaching Kiyomizudera. It is now lined with little shops and cafés, also you can visit “**Donguri**” which is the official Ghibli shops in Japan.



Continue your stroll to reaching the **Geisha district of Gion**, famed for the preservation of its traditional architecture and traditional entertainment presented by graceful “**Geiko**,” which literally means “women of art.” During its golden age in the first half of 19<sup>th</sup> century, more than 3000 Geikos worked in some 700 teahouses in Gion.



You will transfer to the **Kinkaku-ji (Golden Pavilion) Temple**, built in 1397 to serve as a retirement villa for Shogun Ashikaga Yoshimitsu, whose grandson actually used as the inspiration for the Ginkaku-ji (Silver Pavilion) temple.



Continue to the serene **Ryoan-ji Temple**, prominent for its rock garden comprised of nothing but clay walls, raked sand and fifteen rocks. It is intriguing to interpret the garden’s mysterious arrangement based on intuition. Compare the stark differences between magnificence of Kinkakuji and the simplicity of Ryoanji temples.

Come back to the hotel by 17:00.

**Overnight at The Ritz-Carlton, Kyoto**

### Day – 7, Kyoto – Day Trip to Tomogashima

At 8:30, meet **English Speaking Guide** in the lobby and leave for Day Trip to Tomogashima by Private Chartered Car. Transfer to Kada Port and take ferry to Tomogashima (it takes about 2h to Kada Port with normal traffic condition).

**Ferry / Kada 11:00 – 11:20 Tomogashima (Non Reserved)**

**Tomogashima** is a group of uninhabited islands in Wakayama Prefecture. The islands are known for the now–abandoned and run–down military forts built in the Meiji Era. The dilapidated red brick structures and overgrown vegetation give the island an uncanny resemblance to Laputa, the floating island in the Studio Ghibli movie *“Castle in the Sky”*.



After the exploration, you will take ferry back to Kada Port.

**Ferry / Tomogashima 16:00 – 16:20 Kada (Non Reserved)**

Come back to the hotel by 18:30.

**Overnight at The Ritz–Carlton, Kyoto**



### Day – 8, Kyoto – Day Trip to Nara

At **9:00**, meet your **English Speaking Guide** in the hotel lobby and transfer by Private Chartered Car to **Nara**, the ancient capital of Japan in the 8<sup>th</sup> Century.

Start from **Nara Park**, a large pleasant park in the center of Nara. Commonly known as “Deer Park,” it is home to hundreds of freely roaming deers, a symbol of the city and regarded as messengers of the gods in the Shinto Religion. The Nara Park houses several famous sights.



Then followed by **Kasugataisha Shrine**, originally established in 768A.D. as the shrine of the powerful Fujiwara Family. See the magnificent interior famous for its numerous bronze hanging lanterns, as well as the many stone lanterns that lead up to the shrine.

Move on to the gigantic **Todaiji** temple, reputedly the largest wooden buildings in the world and one of Japan’s most famous and historically significant temples to be overwhelmed by the giant statue of Buddha Virocana.



Finish your Nara tour in **Naramachi**, the former merchant district of Nara, which was not affected by bombings during the Second World War.

On the way back, you can also visit **Fushimi Inari Taisha** – the head shrine of Inari, and it's at the base of a mountain also named Inari which is 233 metres above sea-level, and includes trails up the mountain to many smaller shrines. Since in early Japan Inari was seen as the patron of business, each of the Torii is donated by a Japanese business.



Come back to the hotel by 17:00.

**Overnight at The Ritz-Carlton, Kyoto**

### Day – 9, Move to Onomichi

At 9:30, check out the hotel, meet your **English Speaking Assistant** in the hotel lobby and transfer to **Kyoto Station**.

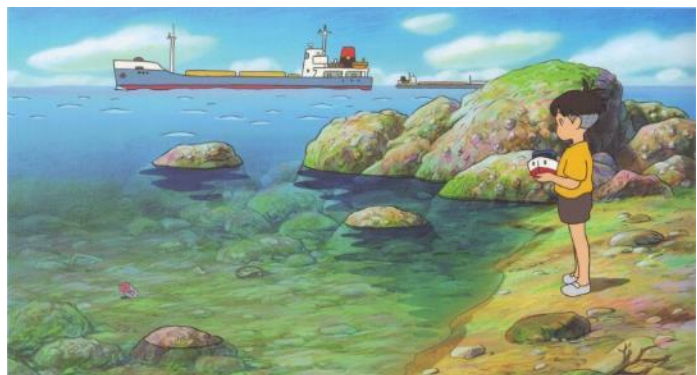
#### **[Suggested Schedule]**

**Bullet Train Nozomi #15 / Kyoto 10:23 – 11:39 Fukuyama**



Upon arrival at **Fukuyama Station**, you will be welcomed by **English Speaking Guide** and leave for excursion by Private Chartered Car.

Transfer to **Tomonoura** which is a port town at the southern end of Fukuyama City, Hiroshima Prefecture. Situated at a bay facing the Seto Inland Sea, the picturesque port town features an endearing old-fashioned fishing townscape, with a calm and laid-back atmosphere. This beautiful town was the inspiration for Hayao Miyazaki's film, *"Ponyo on the Cliff"* by Ghibli Studios. Miyazaki himself spent a few months living in this town in a secluded forested hilltop.



The old town center of Tomonoura has many photogenic alleys lined by rustic old houses with wooden facades. There are a few shops selling homeishu, the local medicinal liquor. The bayfront area is littered with small boats, demonstrating the port's continuing relevancy. Here are some attractions around the town center.



Visit at **Ota Residence** – The spacious Ota Residence belonged to a family who started brewing homeishu in the late 17th century. From 1710 to the onset of the Meiji Period, the family flourished as it was granted the monopoly over homeishu production. The residence was later sold when business took a downturn, but its new owner preserved many features of the buildings.

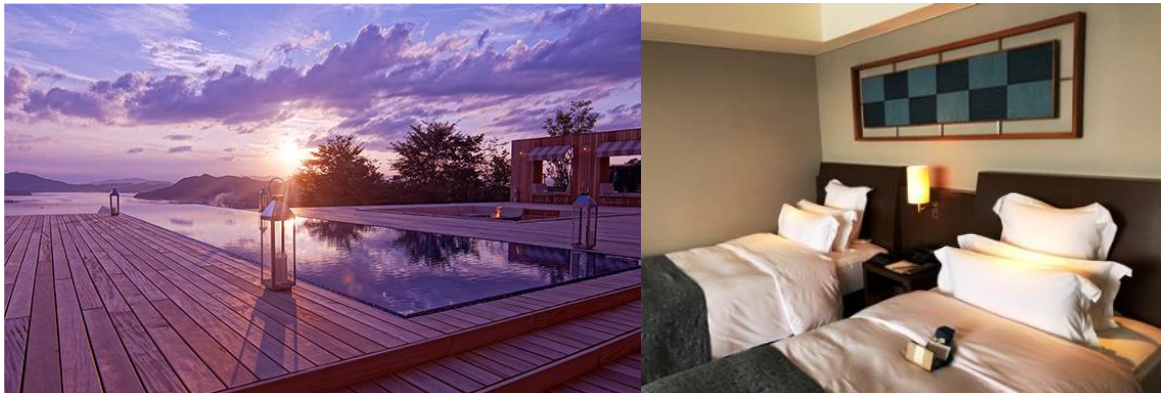


After the visit, you will transfer to the hotel and check-in by 17:00.

### **Bella Vista Spa & Marina Onomichi**

Standing on a hill with a view of the Seto Inland Sea, this hotel is a hideaway resort. Can see beautiful ocean landscape which guests can gaze at while enjoying a relaxing stay, forget your everyday busy life and troubles, and liberate yourself here.

All 44 guestrooms feature a breathtaking view of the many islands dotted throughout the Seto Inland Sea.

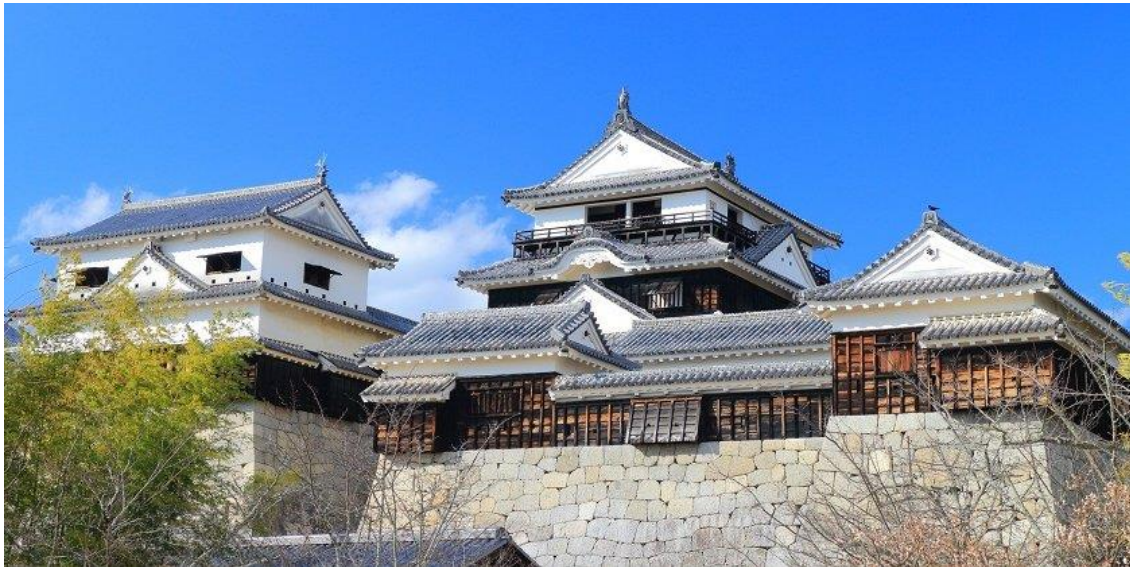


**Overnight at Bella Vista Spa & Marina Onomichi**

### Day – 10, Onomichi – Day Trip to Matsuyama

At 9:00, meet **English Speaking Guide** in the lobby and leave for Day Trip to Matsuyama by Private Chartered Car. (it takes about 2h with normal traffic condition).

First of all, visit **Matsuyama Castle** which is a flatland–mountain castle that was built in 1603 on Mount Katsuyama, whose height is 132 meters, in Matsuyama city in Ehime Prefecture.



Move on to **Dogo Onsen Honkan** which is the model for the spirit bathhouse in the smash-hit animation “*Spirited Away*”, a movie from Studio Ghibli. Touted as Japan’s oldest bathhouse, this is the place to experience Japan’s traditional bathing culture, and even has baths reserved for the Japanese royal family alone. As you’re walking up Dogo Arcade from the direction of Dogo tram station, the old Dogo Onsen Honkan building seems to peer at you down the tunnel of the arcade.



On the way back, stop by the **Onomichi city** to stroll around. Over the years Onomichi has been the site of many movies and animations. The most famous movie filmed here is undoubtedly the 1953 Tokyo Story by Ozu Yasujiro, considered by many to be one of the greatest Japanese movies ever.



Come back to the hotel by 18:00.

**Overnight at Bella Vista Spa & Marina Onomichi**



### Day – 11, Move to Yakushima

At 9:00, check out the hotel, meet your **English Speaking Assistant** in the lobby and transfer to **Fukuyama Station** by Private Chartered Car.

#### [Suggested Schedule]

**Bullet Train Nozomi #5 / Fukuyama 10:04 – 11:30 Hakata**

At **Hakata Station**, you will be welcomed by your **English Speaking Assistant** and transfer to **Fukuoka Airport** by Private Chartered Car.

#### [Suggested Schedule]

**JAC #3671 / Fukuoka 13:10 – 14:20 Yakushima**

Upon arrival in **Yakushima Airport**, you will transfer to the hotel by Courtesy Car of Sankara Resort & Spa Yakushima.

### Sankara Hotel & Spa Yakushima

A magnet for nature lovers, Sankara Hotel & Spa is a secluded retreat set between mountains, cedar forests and the sea. An idyllic spot perfectly placed for exploring this unique island or for simply relaxing, Sankara has a wonderfully indulgent spa and a superb French restaurant with an award winning French Chef.



Yakushima Island has some of the highest mountains seen throughout Kyushu, rising nearly straight up from the coast. With this steep geographical formation, Yakushima has come to be known as "the Alps of the sea." Warm ocean currents surround the island, yet in winter the mountains are capped in snow. The island is famed for its spectacular river hikes and treks to see ancient Japanese cedars, yakusugi, but it is also a place for enjoying the luxury of doing absolutely nothing.

### **Overnight at Sankara Hotel & Spa Yakushima**

## Day – 12, Yakushima

At **8:00**, meet **English Speaking Guide & Nature Guide** in the lobby and leave for full-day nature trekking.

Yakushima is a striking mountainous island at the southern reaches of Kagoshima Prefecture, off the larger island of Kyushu.

**Shiratani Unsui-kyo Gorge** with the fantastical view resembling a movie scene. It is said that the forest in the anime film *“Princess Mononoke”* by Hayao Miyazaki was inspired from this place. The altitude is 600m (1969ft) at the entrance and about 900m (2953ft) in the forest of Princess Mononoke.



If you are feeling confident and your body is up to it, try going as far as **Taiko-iwa** in the innermost forest. The grand sight of the deepest part of the forest of Yakushima Island spreads before your eyes.



Come back to the hotel by **17:00**.

**Overnight at Sankara Hotel & Spa Yakushima**

### **Day – 13, Move to Osaka**

After checking out the hotel, transfer to **Yakushima Airport** by Courtesy Car of Sankara Resort & Spa Yakushima. Take domestic flight.

#### **[Suggested Schedule]**

JAC #2450 / Yakushima 14:50 – 16:25 Itami



Upon arrival at **Itami Airport**, you will be greeted by **English Speaking Assistant** and transfer to the hotel.

### **St. Regis Osaka**



Discover unforgettable ambiance and state-of-the-art amenities in our 160 guest rooms and suites—the most spacious and elegantly appointed in Osaka. Every experience is enhanced with St. Regis Butler Service, available any time, day or night.

### **Overnight at St. Regis Osaka**



**Day - 14, Osaka - Kansai International Airport**

After checking out the hotel, meet with **English Speaking Chauffeur** in the hotel lobby to transfer to **Kansai International Airport** by chartered car. Check in at the counter by yourself to board your international flight. Have a safe flight!



**\*\*\* END OF YOUR JAPAN JOURNEY \*\*\***